

KR

KATHERINE RICHARDS

ART  
GALLERY

WHERE CONTEMPORARY ART  
MEETS STYLISH INTERIORS

COLLECTION NINE

'LIFE'

6TH OCTOBER 2023 – 5TH JANUARY 2024

## WHERE CONTEMPORARY ART MEETS STYLISH INTERIORS

Katherine Richards has chosen an imaginative programme of collections comprised of artists whose work shows talent and the expression of free-thinking creativity. The work includes contemporary still-life as well as figurative, sculpture, ceramics and more, and complements Katherine's own striking collection of limited edition lamps

With a wealth of experience creating bold, stylish interiors, Katherine will be on hand to assist with choosing a truly stand-out art piece to transform your favourite living space and infuse it with personality

Enjoy browsing unique artworks in-store or order online securely, and let us arrange shipping for you

## OUR SERVICES

### SUPPORT

We offer an At Home personal service\* to help you place the art piece of your choice to complement a particular room or colour scheme

\*free of charge within a 30 mile radius of Brighton and Hove. Further distances can be arranged on application

### INSTALLATION

We offer a framing service and a national white glove picture hanging service

### DELIVERY

We deliver worldwide using specialist artwork carriers

### OWN ART

We are a member of Own Art, a national scheme that helps you buy original art by spreading the cost over 10 monthly payments

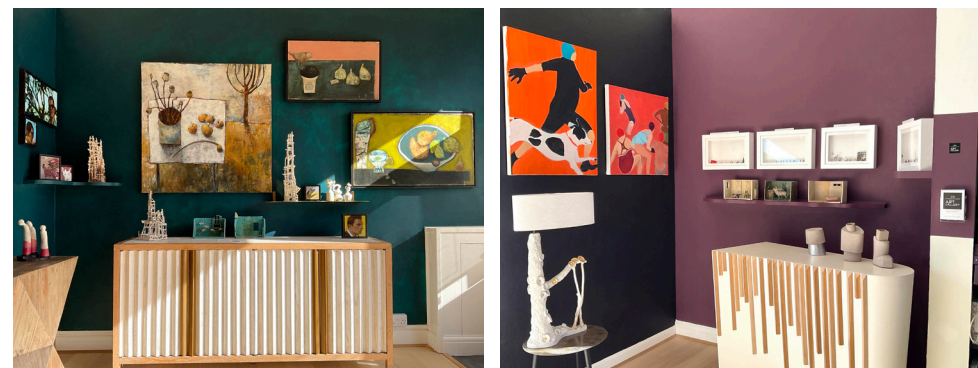
# COLLECTION NINE

## 'LIFE'

6TH OCTOBER 2023 – 5TH JANUARY 2024

Katherine's newest Collection is entitled 'Life', a deceptively small word to encompass a wide range of themes and works of great charm and curiosity, from the comfort of everyday domestic still life to cartographic representations of geo-political boundaries

Headliner Linda Burris Webster is a visual artist whose photography features her sculptures from torn maps in an exploration of social and political dilemmas. Sally Ellis creates vibrant paintings of still life through the lens of abstraction, and ceramicist Emma Fenelon presents a series of new sculptures inspired by the relics at Ness, the secret military site in Suffolk. There are small clay-fired sculptural pieces and lighting by Katherine Richards, alongside paintings and ceramics. Tim Bates and other talented contemporary artists, such as Irene Marot and Louise Robinson, complete this intriguing new autumn collection



Explore the gallery and artists in detail via our online Viewing Room on our website

# KATHERINE RICHARDS

## SCULPTURAL LIGHTING

Katherine runs an established interior design consultancy in Hove, East Sussex and having had a varied career spanning a wide variety of artistic disciplines, she has established a reputation for providing a passionate and inspiring approach to interior design. The rich and eclectic mix of experiences she has gained contributes to her individual artistry and vision, which defines her approach now

Katherine's understanding of sculpture enables her to find the form, shape and balance within a room and her theatrical training pushes the aesthetic boundaries, creating unique, exciting visions. Her collection of sculptural lamps is comprised of seven pieces, all of which are startlingly different. Each one is sculpted in clay by Katherine, cast in resin and meticulously hand finished with gold leaf

A fascination of shadows, contrast and texture underpin the design in these designs and creating illuminated sculptural pieces is a culmination of all this. Lighting has always been of great interest and, in her interior design work, Katherine spends a large part of her time focusing on bringing impact to a space and considering the way in which it affects us and the moods it creates



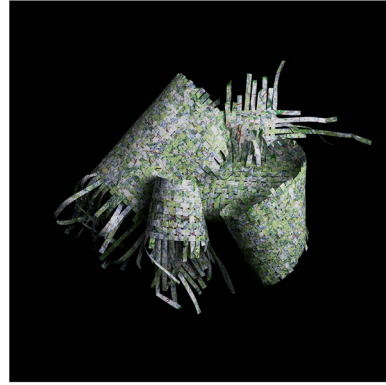


# LINDA BURRIS WEBSTER

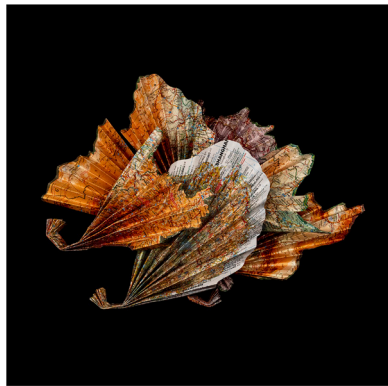
## CARTOGRAPHICA



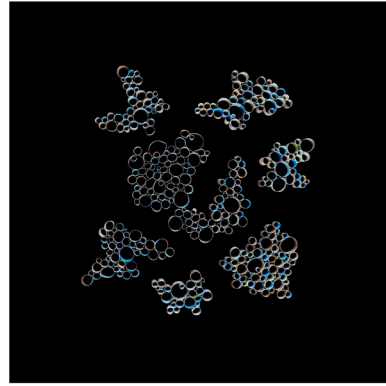
Afghanistan: Tumbling



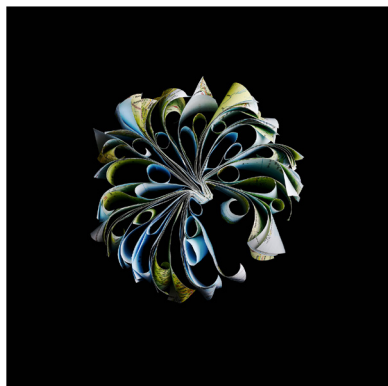
Bosnia Herzegovena: Fabrication



China: Secrets and ...



Greenland: Sliding Away



Malaysia: Silenced Words



Ukraine: Flight paths

Linda creates three-dimensional sculptures using maps which she photographs, as graphic representations of spatial concepts, and as a way to make sense of the world. She is deeply interested in the use of abstract and semi-abstract forms to convey meaning

Through tearing, twisting, cutting, crumpling and sculpting maps, she transforms the familiar into the unfamiliar. Photographing the constructions moves them towards greater abstraction, returning them to two-dimensional forms to harness their ambiguity and complexity. Her work seeks to express the narrative of place and explore current social and political dilemmas including environmental destruction, human rights violations, economic inequality, political upheaval and war

Linda's aim is to use these images as a vehicle for open-ended enquiries, to explore and question some of the headlines of our increasingly interconnected world, rather than present a binary position of good and evil, or right and wrong. The issues she seeks to reflect in her work are neither static nor confined. They invite us to consider how close to the precipice is any modern state, how any land moves from what isn't to what is

# IRENE MAROT

## OIL ON CANVAS

Irene's trajectory from sixth form to art college was interrupted by her role in a school performance of the play 'Our Town', following which she proceeded to take the drama route

She subsequently reconnected with painting following her son's birth, age 42. After completing both a Degree and an MA in Fine Art Painting at the University of Brighton, actor Irene turned fully artist. Having always drawn, she continued to explore the provocative act of painting

Irene lives in a small village on the South Downs, which very quickly impacted her practice. She noticed how the extraordinary is held in the ordinary. Recognising a strong connection to the animal world, she tracks feelings and responses to the energetic source of the natural shapes around her. Her paintings, she says, are conduits for metaphysical forms moving through space

Irene has exhibited in various venues and galleries, and her work is currently part of the exhibition 'Mythical wood' at Stanton Guildhouse in the Cotswolds. She latterly exhibited in the 'Discerning Eye 22' at London's Mall Galleries. She was presented with the 'Selectors' Prize' at the Royal Cambrian Academy 2021 exhibition, and has work included in the Duchess of Wessex's collection

Irene's current body of work is inspired by the obsession with sea-swimming, encouraged by the ritual morning swims of an 89 year-old woman and her sea-gauging forecasts. Irene's paintings in oil attempt to find expression for these heightened states of feeling



RACE TO THE SEA



SOMETIMES WHEN YOU GET KNOCKED  
DOWN, IT'S HARD TO GET BACK UP AGAIN

# SALLY ELLIS

## MIXED MEDIA

Sally Ellis is a contemporary artist from Bewdley, Worcestershire. She breathes life into everyday compositions and domestic scenes through her vibrant acrylic paintings, seen through the lens of abstraction. Guided by intuition, she layers, sands, and scrapes paint to reveal beauty in spontaneity.

Sally's work has been collected across the UK since 2006 and recently earned recognition at prestigious exhibitions like the Royal Birmingham Society of Artists Open and the Society of Women Artists Open at the renowned Mall Galleries in London.

Sally's art is deeply influenced by her background in nursing, family life, her affinity for vintage pottery, and her enduring admiration for inspirational artists like Shirley Trevena and Mary Fedden RA. Through her work, Sally explores art's power to transcend perceptions, evoke emotions, and spark untold stories.

Sally shares her passion by teaching in her studio. Her classes are an invitation for both beginners and experienced artists to discover the liberating freedom that comes from shedding expectations and embracing the joy of spontaneity in creative expression



APPLES



# EMMA FENELON

## CERAMICS

Since graduating with a 1st class honours in Ceramics from Camberwell College of art in 2006, Emma Fenelon has worked from her studio in Peckham. Her childhood seeped espionage, and travel continues to provide stories for her work

Her work explores the balance of things; light and dark, hidden and revealed, internal and external. The sculptures are often set off by shadows, holding depths and mystery. At times both votive and liminal, it explores the act of dwelling, of inhabiting. The towers stand in for us, connecting us to place, to story, to possibility and to ourselves

Her ceramic sculptures are in public and private collections



CERAMIC SCULPTURES

# RAY RICHARDSON

## OIL ON LINEN

Ray Richardson was born in Woolwich S.E. London in 1964. He studied at St Martin's School of Art and Goldsmiths College. He has lived and worked in London, Brussels, Paris and Chicago. He currently lives and works in S.E. London

His paintings are more than just a mirror of everyday life. They are drawn from his own experience of being born and bred in London, from living and working there as well as beyond there. When you look at his work, on the one hand you can experience it through his painting heroes, from Vermeer to Rembrandt through to Hopper and Richter and all the usual suspects of art history. But you can also see it through the minor musical language of Gil Scott Heron and Marvin Gaye, or the pulp history of James Ellroy or David Mamet, and the motivation of cinema and photography from Martin Scorsese, David Lynch through to William Klein

His work is included in the permanent collections of The British Museum, The V&A and the National Portrait Gallery, London

*'Ray Richardson is the Martin Scorsese of painting'*

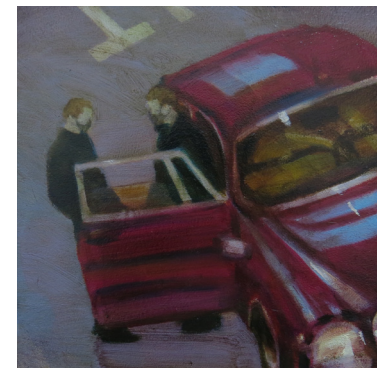
Lindsay MaCrae GQ Magazine

*'Ray Richardson is the David Lynch of paint and canvas'*

Iain Gale The Independent



PLUSH



DEALS ON WHEELS

# TIM BATES

## BRUTALIST DESIGN - LIGHTING

Minimal theatricality. Tim's work has a sense of both, borne of an interest in theatre and brutalist architecture. The interior space also features in some pieces – staircases, openings and passageways giving an atmosphere of an empty room or outside space

Stories can be told here

Recent pieces are more reflective of the outside – the architectural shell sometimes adorned with gold. Tim strives to echo the concrete surface, the terrazzo finish through the use of raw, unglazed clay

Light always plays a part in these pieces, creating shadows and yet further mystery. An architectural space, inner or outer, cannot be conceived without thought given to how the light will react with the angles and the surfaces. These are not functional lighting pieces – more atmospheric, ambient

The raw materials dictate the colour palette. Some pieces are enhanced with graphite, others gold. However there might also be a shot of a single colour to be glimpsed through an opening, drawing you in.....

Tim divides his time between teaching art in Brighton and living in Brittany with his family. In both places he works with clay to create very different bodies of work. In France his work is functional – jugs, bowls plates, while in the UK it is more sculptural and architectural, usually taking the form of lighting pieces, each one unique, exploring various themes. They are quiet and understated, minimal in form and colour, but with a strong architectural presence



YELLOW BOWL



LE CORBUSIER GOLD

# LOUISE ROBINSON

## MIXED MEDIA

London-based artist Louise Robinson is a storyteller who has always loved the tiny, ethereal, macabre, magical, whimsical and kitsch

She meticulously hand-paints and stages her "little people" and sets them in story-boxes, inviting viewers behind the glass so they can immerse themselves in pared down narratives and understated snapshots of the contemporary world

These exquisite little scenes remind us that we are very small in a vast universe, that we are unique, vulnerable yet strong, insignificant yet special, and that we live in a shared commonality

Louise's worlds are both amusing and provocative. She feels passionately about rehoming animals, and her latest work, The Rescue Series, is a comment on the fact that when we rescue them, their companionship and love can rescue us too



WHEN WE WERE YOUNG



# ALVARO TAMARIT

## MIXED MEDIA/OIL ON RECLAIMED WOOD

Alvaro Tamarit is an artist, sculptor and teacher. Specialising in furniture and functional objects, he creates unique commissions and bespoke pieces which are inspired by nature and have a sense of play. His passion is to teach, helping others to learn about art and the environment, language and an appreciation of the planet. His courses and learning resources are designed to help others to become inspired through knowledge and play

The work is inspired by a deep reverence for the environment and respect for nature. He is an advocate of slow living and a lover of different cultures, bringing his native Spanish influence into all that he does, but also taking inspiration from French, English, Italian and Indian cultures, all of which have been a big part of his personal journey

A lifelong student, Alvaro not only loves to teach others art, but is continually looking to how he can create art with function as well as beauty. His work conveys a message of practicality and self-sufficiency, reducing and reusing wherever possible and creating new narratives out of the items we use daily. Why should a chair not be beautiful and made with meaning or everyday household essentials made sustainably and artistically?

This is Alvaro's mission and passion – to introduce art into the everyday



BOAT ISLAND



GREEN ENGINE HOUSE

# LIZ TIRANTI

## MOSAIC

After over twenty years working as a mosaicist Liz embarked on a Master's degree to consider challenging the conventional mosaic practices she had honed. The guiding principle of her making became how to translate fragment to form. She says, 'After all, mosaic originated in Roman construction techniques, it did not begin as merely decoration'

Using mudlarked finds from London's River Thames, she has created an innovative aesthetic underpinned by an independence of colour. Fragments of glass, ceramic and marble with their own story to tell are reappropriated as mosaicists tesserae to define the shape, narrative and texture of art work that traverses both wall and floor

The mudlarked fragments are used to inform the shape of the artwork. Mortar is visually important rather than the overlooked component of a traditionally constructed mosaic. While the interstices, the spaces between the tesserae, become the negative space which allows the fragments to become forms in themselves

Liz is keen to strike a balance between the intuitive, the conceptual and the aesthetic. She uses colour to honour the mudlarked fragments as treasures while also celebrating the tradition of colour juxtaposition and luminosity in ancient mosaic art traditions

Liz hopes to stimulate conversations about the mosaic-making process and to contribute to its position as both a craft and a fine art form



SHINE



SOUK



# CHRISTOPHER KING

## WOOD SCULPTURE

Christopher King is an artist, designer and craftsman based in the High Weald of East Sussex. His work combines traditional folk art and modernist design to explore our changing relationship with our surroundings and the natural world

Driven by observations of birds in the wild and the growing knowledge of the human impact on bird numbers in our own lifetime, his sculptures reimagine the traditional craft of 'decoy' carving and tap into the ancient, human need to shape simple materials into objects that reflect the everyday experience of nature. Aiming not to create an accurate replica but something that acts more like a glimpse, or an idea of a bird - a simple form holding a moment of stillness and connection

Christopher carves all his pieces using simple hand tools from sustainable, found or recycled wood from the areas surrounding his home in the High Weald



## GIFT VOUCHERS

Give the gift of choice

Do you know someone who is looking for an artwork as a focal point or accent piece in their home or office space?

For anyone who loves art, colour and design, being able to choose an artwork with a Katherine Richards Art Gallery Gift Voucher makes a wonderful, thoughtful present

We offer vouchers from £20 which are valid for 12 months from purchase and can be used in conjunction with the Own Art payment scheme

Available to buy at the gallery or online

---

## GALLERY EVENTS

In 2023/24 we are hosting a series of exclusive 'Evenings With' where you can meet the artists we represent to learn about their work and influences. Deciding to buy an artwork once you have met the person who created it is a rewarding experience

To receive an invitation to these intimate and convivial artist talks as well as other gallery events, please join our mailing list

---

## DISCOVER AFFORDABLE ART

We are a member of Own Art, a national scheme that helps you buy original art by spreading the cost over ten interest-free monthly payments

Invest in a beautiful piece of artwork without a large up-front cost

Enquire about applying for an Own Art 0% interest-free loan available from £200 to £2,500 - T&Cs apply





## GALLERY ARTISTS

The gallery's signature style is a lively aesthetic of quirk, style and boldness. Katherine has chosen the following artists for their quality, contrast, and expression of free-thinking creativity



**KATHERINE RICHARDS**  
SCULPTURAL LAMPS



**KATHERINE RICHARDS**  
SCULPTURE



**STUART BASS**  
ACRYLIC INKS AND RESIN



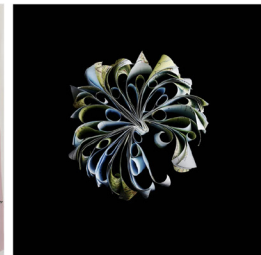
**TIM BATES**  
BRUTALIST DESIGN



**KERRY LOUISE BENNETT**  
ACRYLIC AND OIL ON CANVAS



**PHOEBE BODDY**  
ACRYLIC ON CANVAS



**LINDA BURRIS WEBSTER**  
CARTOGRAPHICA



**JOANNEKE CARBAAT**  
ACRYLIC ON CANVAS



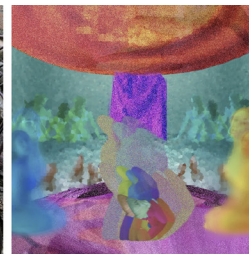
**NICK CARRICK**  
OIL ON PAPER



**SALLY ELLIS**  
MIXED MEDIA



**EMMA FENELON**  
CERAMICS



**NAOMI KESHET**  
PHOTOGRAPHY



**SUSAN KESHET**  
OIL ON CANVAS



**CHRISTOPHER KING**  
WOOD SCULPTURE



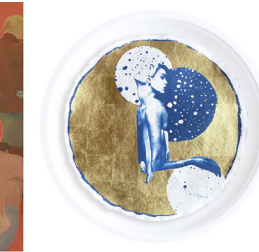
**AVIS LANE WILLAN**  
MIXED MEDIA



**ANNA MACDONALD**  
ACRYLIC ON CANVAS



**IRENE MAROT**  
OIL ON CANVAS



**CHLOE MCCARRICK**  
MIXED MEDIA



**LUCY MERRIMAN**  
SILK SCREEN PRINT



**SARAH MONEY**  
OIL ON CANVAS



**PATRICK MORALES-LEE**  
SCREEN PRINT



**OLI MUMBY**  
PASTEL & ACRYLIC



**RAY RICHARDSON**  
OIL ON BELGIAN LINEN



**LOUISE ROBINSON**  
MIXED MEDIA



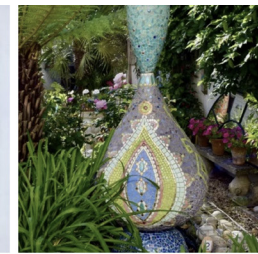
**NIGEL SHARMAN**  
OIL ON CANVAS



**LISA STEVENS**  
PORCELAIN



**ALVARO TAMARIT**  
ACRYLIC AND OIL ON CANVAS



**LIZ TIRANTI**  
MUDLARKING

QR CODE



SCAN THIS CODE WITH YOUR PHONE'S  
QR READER TO GO STRAIGHT TO OUR  
WEBSITE FOR MORE DETAILS  
AND ONLINE PURCHASING



w: [katherinerichardsartgallery.co.uk](http://katherinerichardsartgallery.co.uk)

 [katherinerichardsgallery](https://www.instagram.com/katherinerichardsgallery)

Gallery: t: 01273 980711 e: [art@katherinerichards.co.uk](mailto:art@katherinerichards.co.uk)

Press & PR: t: 07799 417517 e: [pr@katherinerichards.co.uk](mailto:pr@katherinerichards.co.uk)

111 Portland Road, Hove, East Sussex BN3 5DP